



Analoge koppeling

Handleiding voor inbedrijfstelling

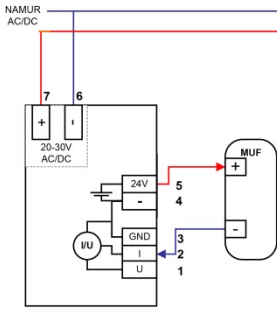


System requirements:

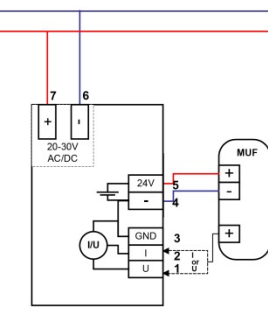
- Base from Version 1.44
- Saveris PC software from Version 4.0 Service pack 5

Voeding van de meetomvormer (24V / 150mA) via de analoge koppeling

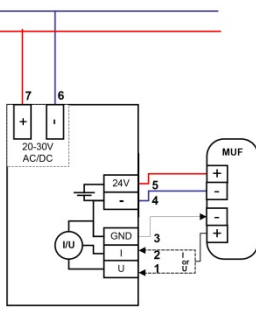
**2-draad-stroommeting
(4-20mA)**



**3-draad-stroom-/
spanningsmeting**

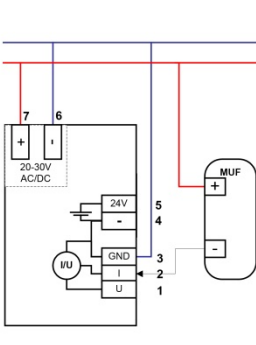


**4-draad-stroom-/
spanningsmeting**

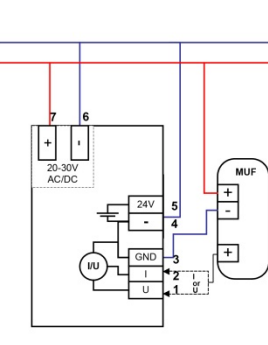


Gescheiden voeding van de meetomvormer

**2-draad-stroommeting
(4-20mA)**



**3-draad-stroom-/
spanningsmeting**



**4-draad-stroom-/
spanningsmeting**

