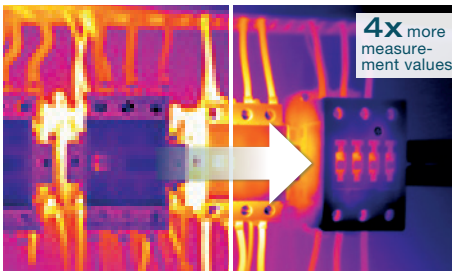


## The thermal imagers testo 872 and testo 883 for preventive maintenance.

- Avoid production downtimes
- Ensure process security
- Reduce energy costs

### Key benefits

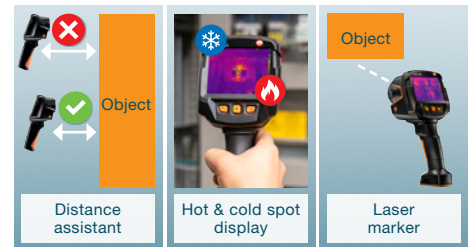
#### Keeping an eye everything



Resolution up to 640 x 480 pixels for more details.



Ergonomic design and large display.



Various assistance functions for successful images can be combined with each other.

#### Complete documentation

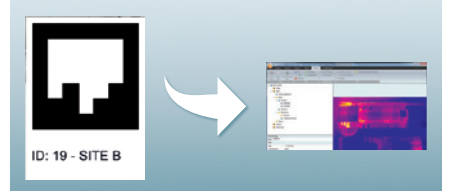


**testo Thermography App:** Analyze and document thermal images, and share them with colleagues, quickly and easily.



**testo IRSoft:** Intuitive analysis software with professional report creation.

#### Clear measurement location management



**testo SiteRecognition:** Efficiency thanks to regular measurements.

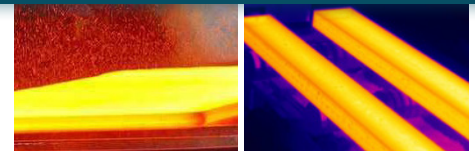
### Applications



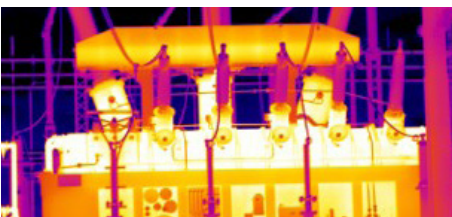
Switching cabinets and electrical components.



Mechanical components such as shafts, bearings, engines



Process checks in the high-temperature range up to 1200 °C.



Transformers, substations, overhead lines



Process liquid filling level checks.



Fast detection of leaks and energy-saving potential in building management.